

CANDLEWOOD LAKE

UNIT 8

111444

DESCRIPTION

SITUATED IN the Township of Congress, County of Morrow, and State of Ohio, being a part of Section 8 & 17 Township 18, Range 20, containing 188.74 acres in Unit 8.

SURVEYOR'S CERTIFICATION

I HEREBY CERTIFY that the within plat of Unit 8 Candlewood Lake was prepared by the office of George W. Raikie, Inc., Consulting Engineers and Donald S. Vermilya, Registered Surveyor.

All bearings were computed from a magnetic bearing taken on June 29, 1971 and all distances are in feet and decimals thereof.

Donald S. Vermilya
Registered Surveyor No. 5695

DECLARATION AND DEDICATION

We do hereby certify that we are the owners of the land shown on the above plat and we do certify that we have caused the survey and subdivision thereof to be made as shown on the above plat and to be known as "Candlewood Lake Subdivision" 302 LOTS 1-302 AND PARCELS 'A' TO 'I' inclusive in the Township of Congress, Morrow County, Ohio, and acknowledge said survey to be correct to the best of our knowledge and belief, and we hereby dedicate those State, County and Township Roads labeled on the map. The streets within the plat labeled "private street" are hereby reserved for the use of all public utility companies.

OWNER'S ACKNOWLEDGMENT

BE IT REMEMBERED that Whetstone Development, Inc., a Delaware Corporation owner of the lands shown on the attached plat, do hereby acknowledge the making of said plat to be its voluntary act and deed.

Witnesses
 Whetstone Development, Inc.
 By *Patrick S. Munn*
 PRESIDENT
 By *Ernest C. Auguststein*
 ASST. SECTY.

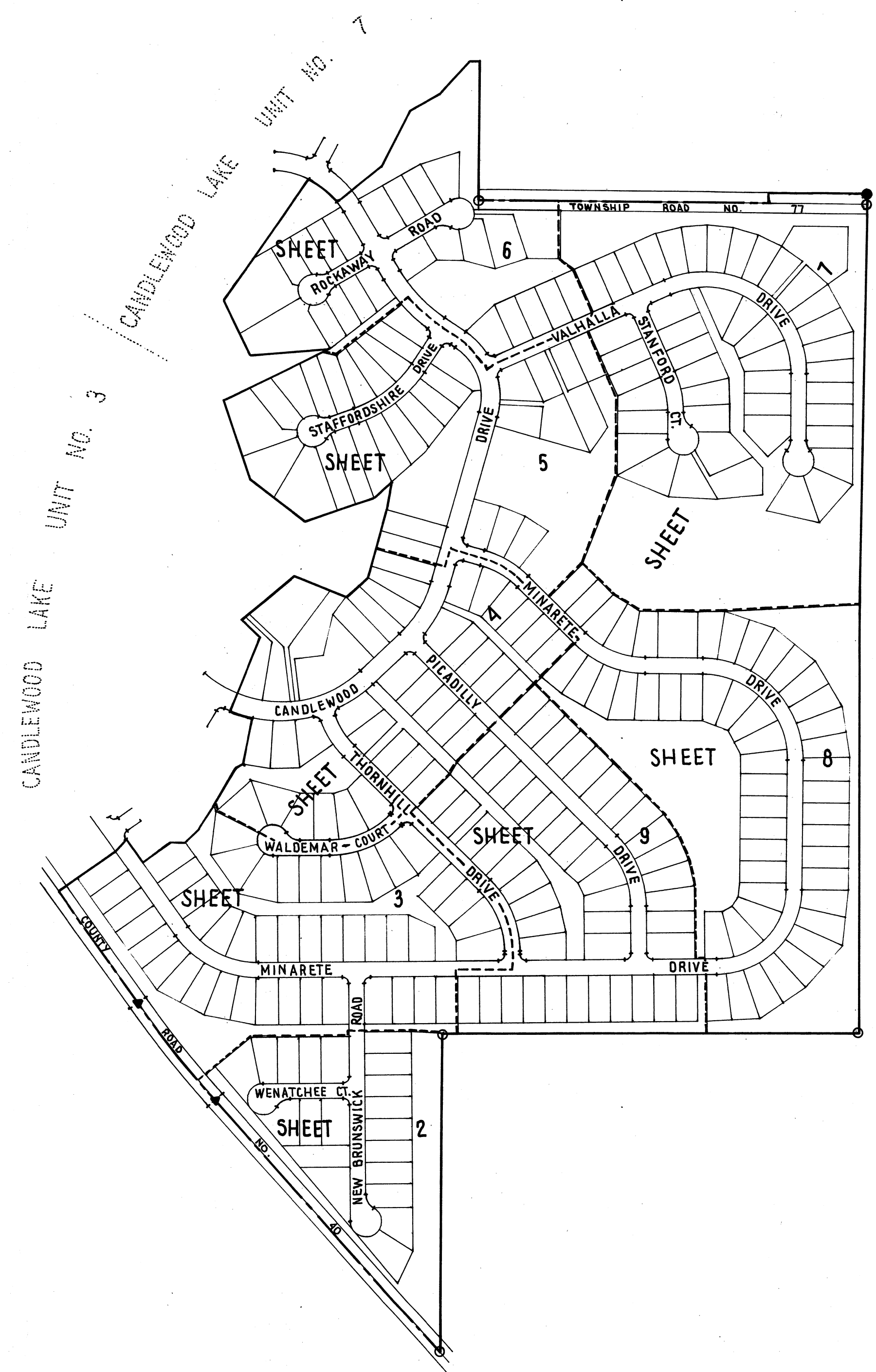
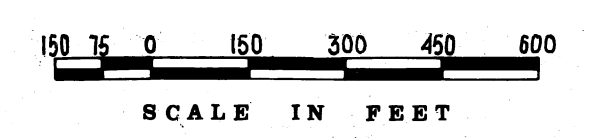
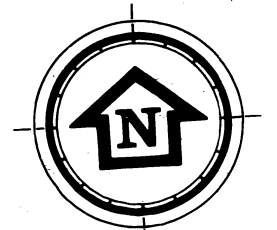
STATE OF MORROW SS

Before me, a notary public, in and for said county, personally appeared PATRICK S. MUNN PRESIDENT and ERNEST AUGUSTSTEIN ASST. SECTY. of Whetstone Development, Inc., the corporation which executed the foregoing Owner's Acknowledgment, who acknowledged that the seal affixed to said instrument is the corporate seal of said corporation; that they did sign and seal said instrument as such PRES. and ASST. SECTY. in behalf of said corporation and by authority of its board of directors; and that said instrument is their free act and deed individually and as such PRES. and ASST. SECTY. and the free and corporate act and deed of said Whetstone Development, Inc.

IN TESTIMONY WHEREOF I have hereunto subscribed my name and affixed my official seal at MT. GILEAD, this 31 day of JULY, 19 72.

Daphne Reptone
Notary Public

My Commission Expires April 9, 1975



ALL PROPERTY CORNERS MARKED BY IRON PINS
 CONCRETE MONUMENT = IRON PIN SET
 = RAILROAD SPIKE SET

PRESENTED TO MORROW COUNTY COMMISSIONERS

THE WITHIN PLAT was presented to the Board of Morrow County Commissioners for their approval on July 31 - 1972
 MORROW COUNTY COMMISSIONERS:
Robert Rhoadbeck
John Shabo
F.F. Bolinger
Clarin Keena
 Clerk

APPROVAL OF MORROW COUNTY COMMISSIONERS

I HEREBY CERTIFY that this plat was approved by the Morrow County Commissioners at a Regular meeting held July 31, 19 72.
 MORROW COUNTY COMMISSIONERS:
Robert Rhoadbeck
John Shabo
F.F. Bolinger
Clarin Keena
 Clerk

APPROVAL OF MORROW COUNTY BOARD OF HEALTH

I HEREBY CERTIFY that this plat was approved by the Morrow County Board of Health at a regular meeting held July 27, 19 72.
Wendell Deibel
 (Title) SANITARIAN

APPROVAL OF MORROW COUNTY REGIONAL PLANNING COMMISSION

I HEREBY CERTIFY that the within plat was approved by the Morrow County Regional Planning Commission at a Regular meeting held July 27, 19 72.
Morris Haca
 (Title) PRESIDENT
Wendell Deibel
 (Title) SECRETARY

APPROVAL OF MORROW COUNTY ENGINEER

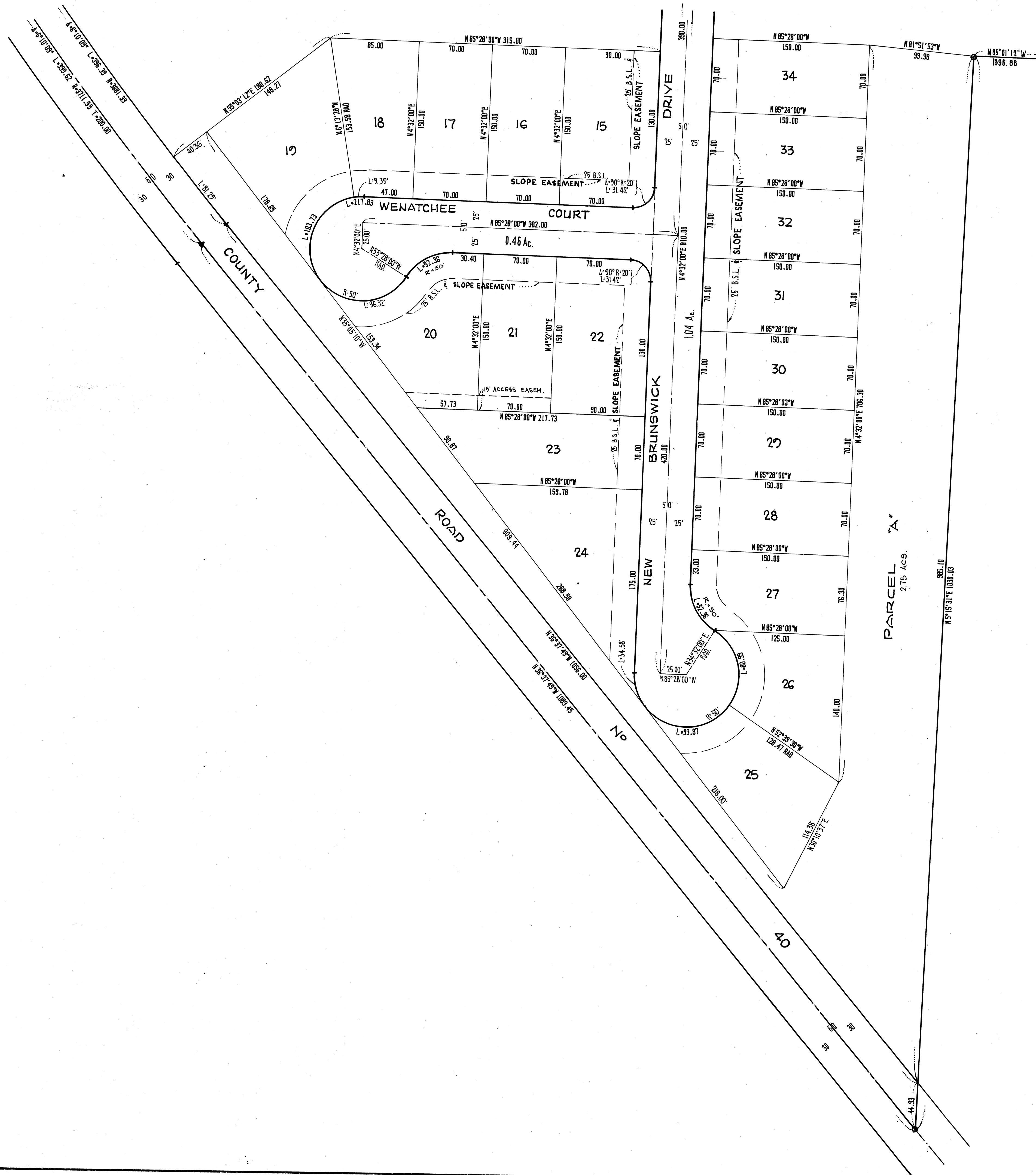
I HEREBY APPROVE the within plat of Candlewood Lake, Congress Township, Morrow County, Ohio, this day of July 31, 19 72.
Justin Carley
 Morrow County Engineer

AUDITOR'S CERTIFICATION

I HEREBY CERTIFY that there are no delinquent or unpaid taxes of record upon the above described property as of the date of transfer.
 TRANSFERRED July 31, 19 72.
Merrill Craigill
 Morrow County Auditor

RECORDER'S CERTIFICATION

I HEREBY CERTIFY that the within plat was filed 9:48 A.M. O'clock July 31, 19 72, in Candlewood Lake Plat Book, Pages 1 to 89 inclusive of the Morrow County Records.
 FEE 63.00
Dorothy Thompson
 Morrow County Recorder

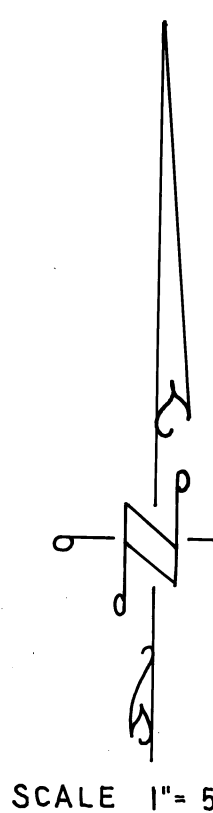


NOTES:

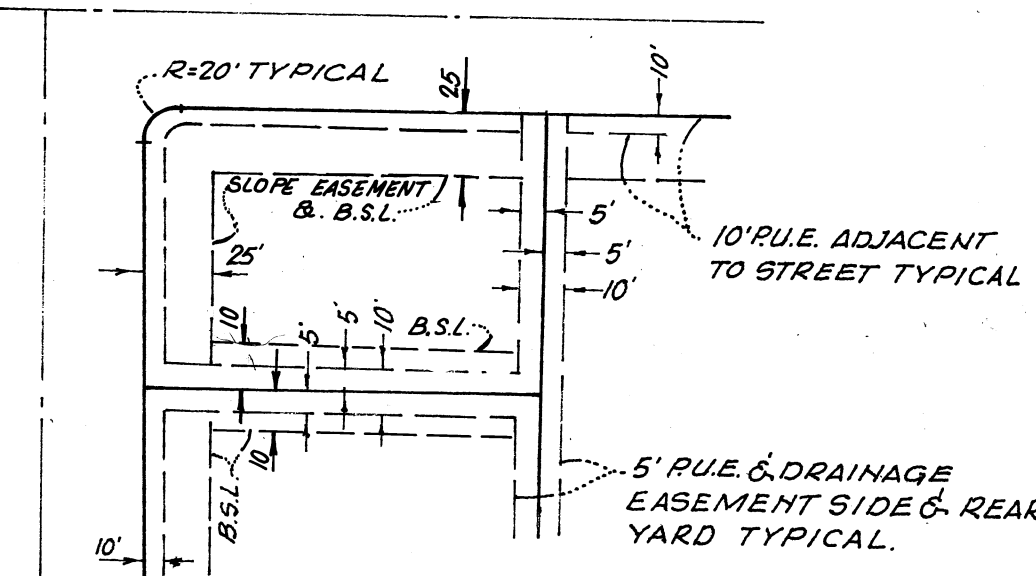
- 1. REAR LOT PINS WERE NOT SET AT THE REAR OF LOTS 185-205, 210-221 AND 230-232 INCLUSIVE
- 2. WITNESS POINTS WERE SET AS SHOWN & 150' FROM THE FRONT LOT CORNER, EXCEPT WHERE NOTED.
- 3. THE LAKE LINE SHOWN IS FOR A NORMAL WATER SURFACE AT ELEVATION 1205 BASED UPON APRIL 1971 TOPOGRAPHY COMPILED BY HENDERSON AERIAL SURVEYS OF OHIO.

LEGEND

- B.S.L. = BUILDING SETBACK LINE.
- L = ARC LENGTH
- T = TANGENT LENGTH
- R.U.E. = PUBLIC UTILITY EASEMENT
- LOTS 'A' TO 'T' INCLUSIVE ARE SUBJECT TO DRAINAGE EASEMENTS IN THEIR ENTIRETY



PRIVATE STREETS EXCEPT WHERE NOTED



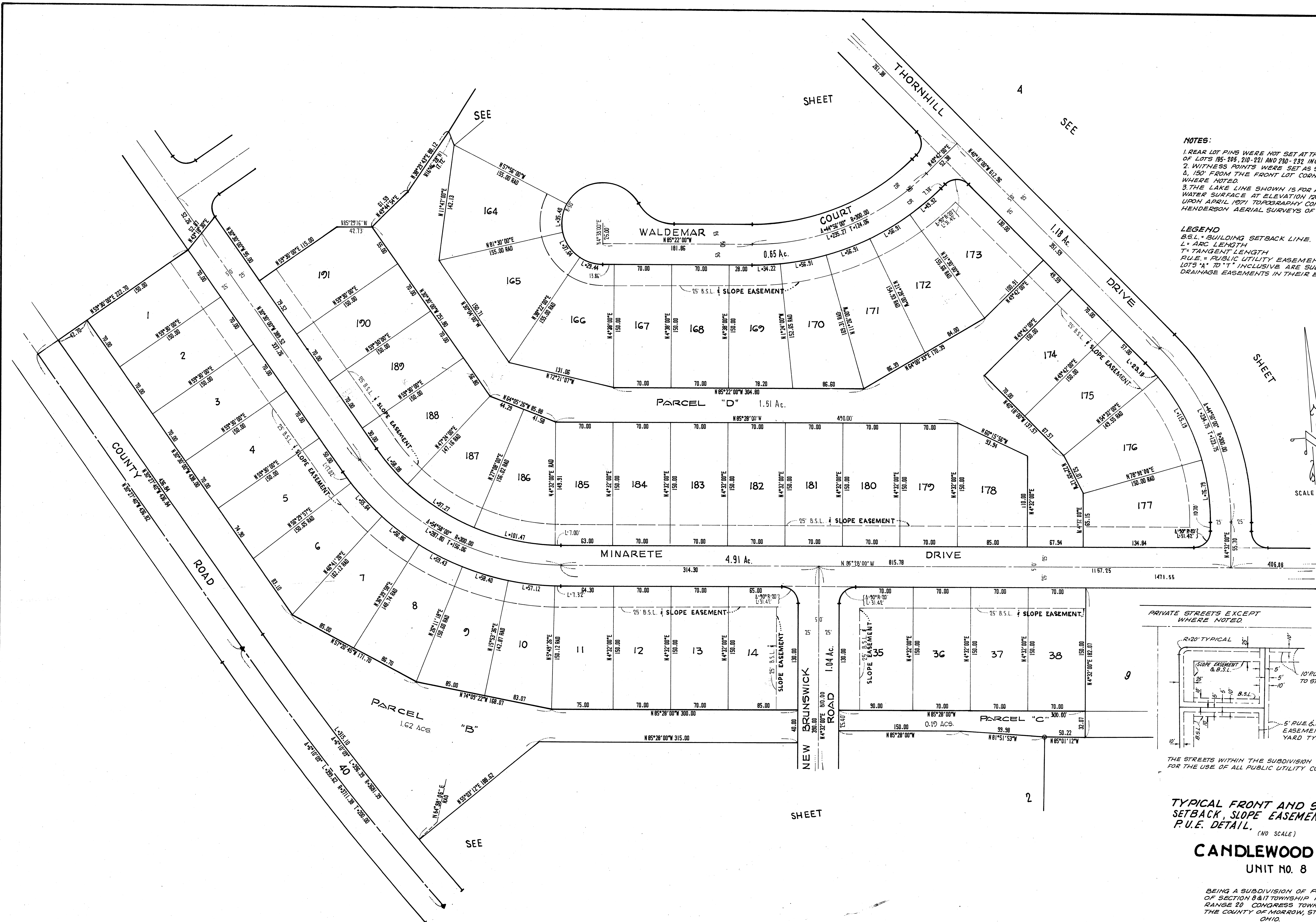
THE STREETS WITHIN THE SUBDIVISION ARE RESERVED FOR THE USE OF ALL PUBLIC UTILITY COMPANIES.

TYPICAL FRONT AND SIDEYARD SETBACK, SLOPE EASEMENT AND P.U.E. DETAIL. (NO SCALE)

CANDLEWOOD LAKE UNIT NO. 8

BEING A SUBDIVISION OF PORTIONS OF SECTION 8 & 11 TOWNSHIP 18 RANGE 20 CONGRESS TOWNSHIP, IN THE COUNTY OF MORROW, STATE OF OHIO.

Volume 1 Page 49

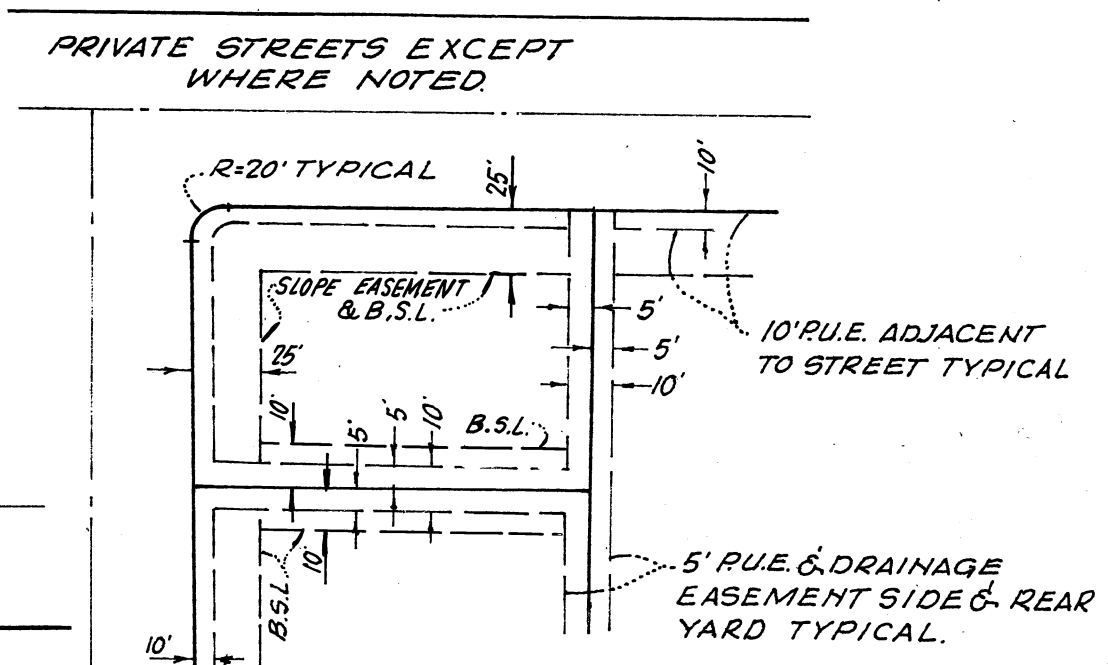
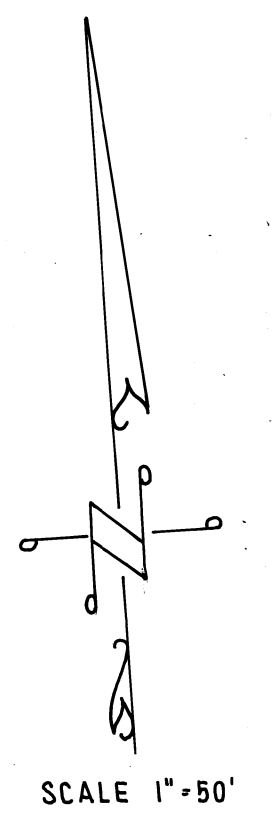


NOTES:

1. REAR LOT PINS WERE NOT SET AT THE REAR OF LOTS 185-188, 210-211 AND 230-232 INCLUSIVE
2. WITNESS POINTS WERE SET AS SHOWN
3. 150' FROM THE FRONT LOT CORNER, EXCEPT WHERE NOTED.
4. THE LAKE LINE SHOWN IS FOR A NORMAL WATER SURFACE AT ELEVATION 1205 BASED UPON APRIL 1971 TOPOGRAPHY COMPILED BY HENDERSON AERIAL SURVEYS OF OHIO.

LEGEND

- B.S.L. = BUILDING SETBACK LINE.
- L = ARC LENGTH
- T = TANGENT LENGTH
- P.U.E. = PUBLIC UTILITY EASEMENT
- LOTS 'A' TO 'T' INCLUSIVE ARE SUBJECT TO DRAINAGE EASEMENTS IN THEIR ENTIRETY

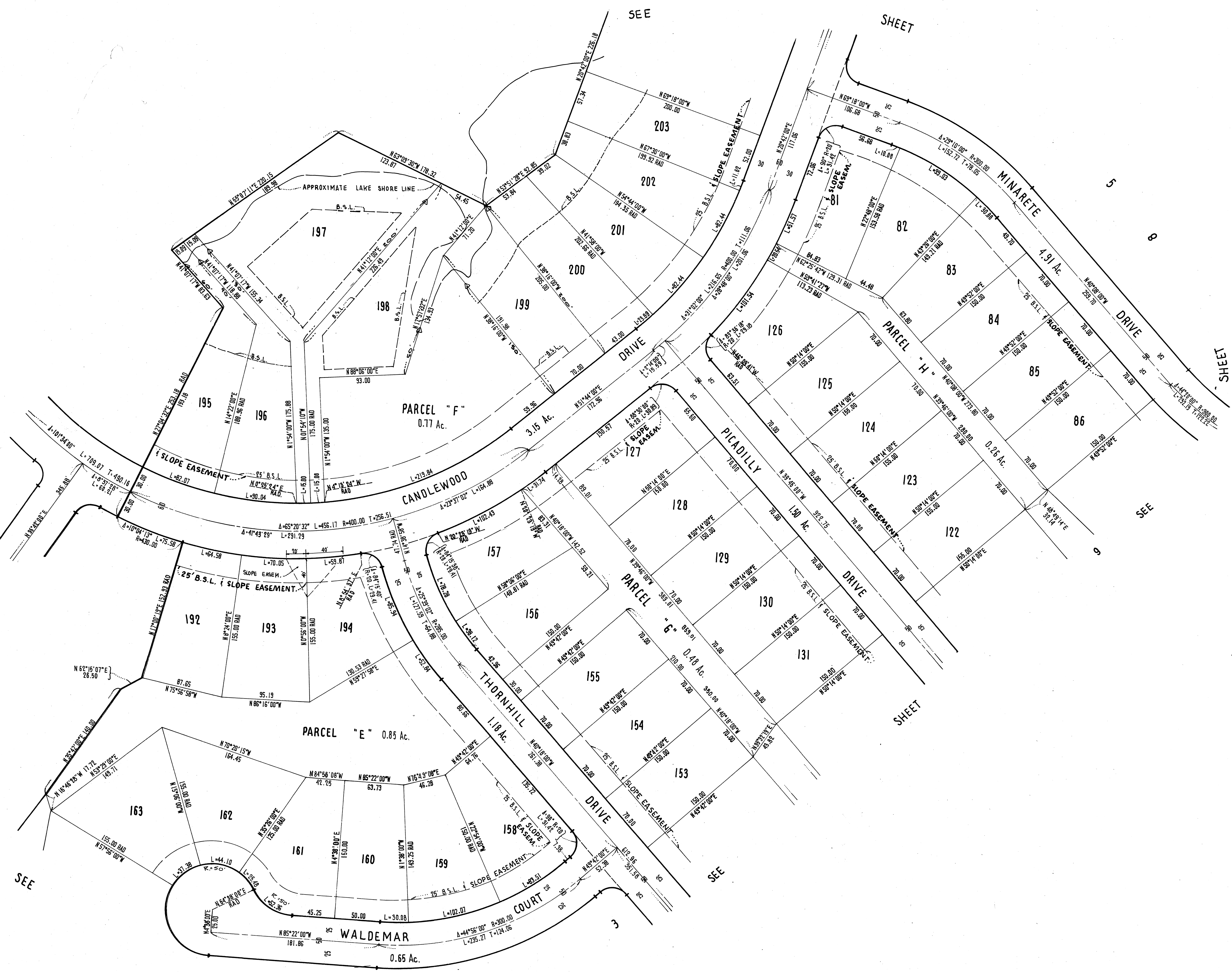


THE STREETS WITHIN THE SUBDIVISION ARE RESERVED FOR THE USE OF ALL PUBLIC UTILITY COMPANIES.

TYPICAL FRONT AND SIDEYARD SETBACK, SLOPE EASEMENT AND P.U.E. DETAIL.
(NO SCALE)

CANDLEWOOD LAKE UNIT NO. 8

BEING A SUBDIVISION OF PORTIONS OF SECTION 8 & 17 TOWNSHIP 18 RANGE 20 CONGRESS TOWNSHIP, IN THE COUNTY OF MORROW, STATE OF OHIO.

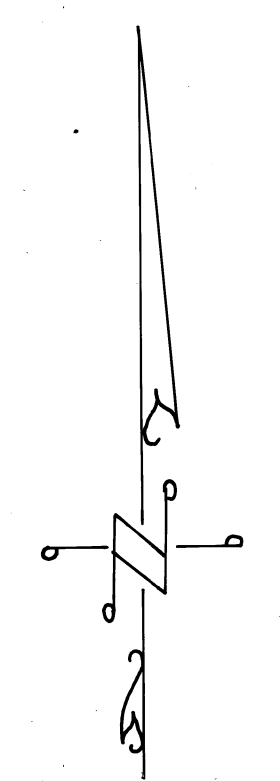


NOTES:

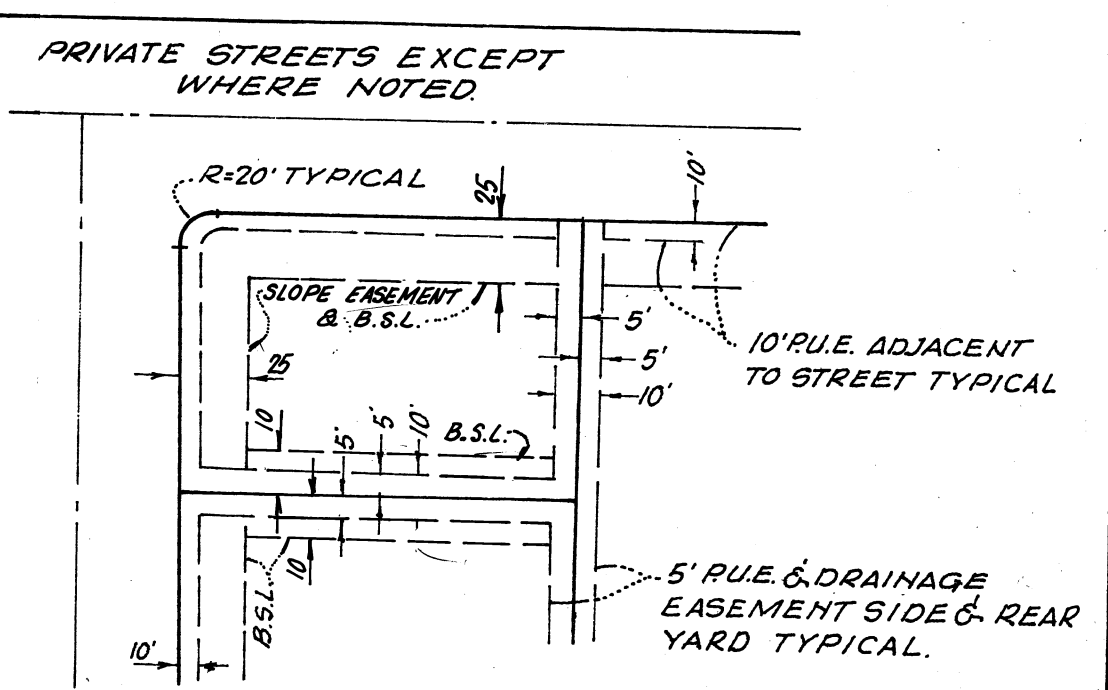
1. REAR LOT PINS WERE NOT SET AT THE REAR OF LOTS 195-205, 210-221 AND 230-232 INCLUSIVE
2. WITNESS POINTS WERE SET AS SHOWN
3. THE LAKE LINE SHOWN IS FOR A NORMAL WATER SURFACE AT ELEVATION 1205 BASED UPON APRIL 1971 TOPOGRAPHY COMPILED BY HENDERSON AERIAL SURVEYS OF OHIO.

LEGEND

B.S.L. = BUILDING SETBACK LINE
 L = ARC LENGTH
 T = TANGENT LENGTH
 P.U.E. = PUBLIC UTILITY EASEMENT
 LOTS "A" TO "I" INCLUSIVE ARE SUBJECT TO DRAINAGE EASEMENTS IN THEIR ENTIRETY.



SCALE 1" = 50'



THE STREETS WITHIN THE SUBDIVISION ARE RESERVED FOR THE USE OF ALL PUBLIC UTILITY COMPANIES.

TYPICAL FRONT AND SIDYARD SETBACK, SLOPE EASEMENT AND P.U.E. DETAIL.

(NO SCALE)
CANDLEWOOD LAKE
 UNIT NO. 8

BEING A SUBDIVISION OF PORTIONS OF SECTION 8 & 17 TOWNSHIP 13 RANGE 20 CONGRESS TOWNSHIP, IN THE COUNTY OF MORROW, STATE OF OHIO.

SEE

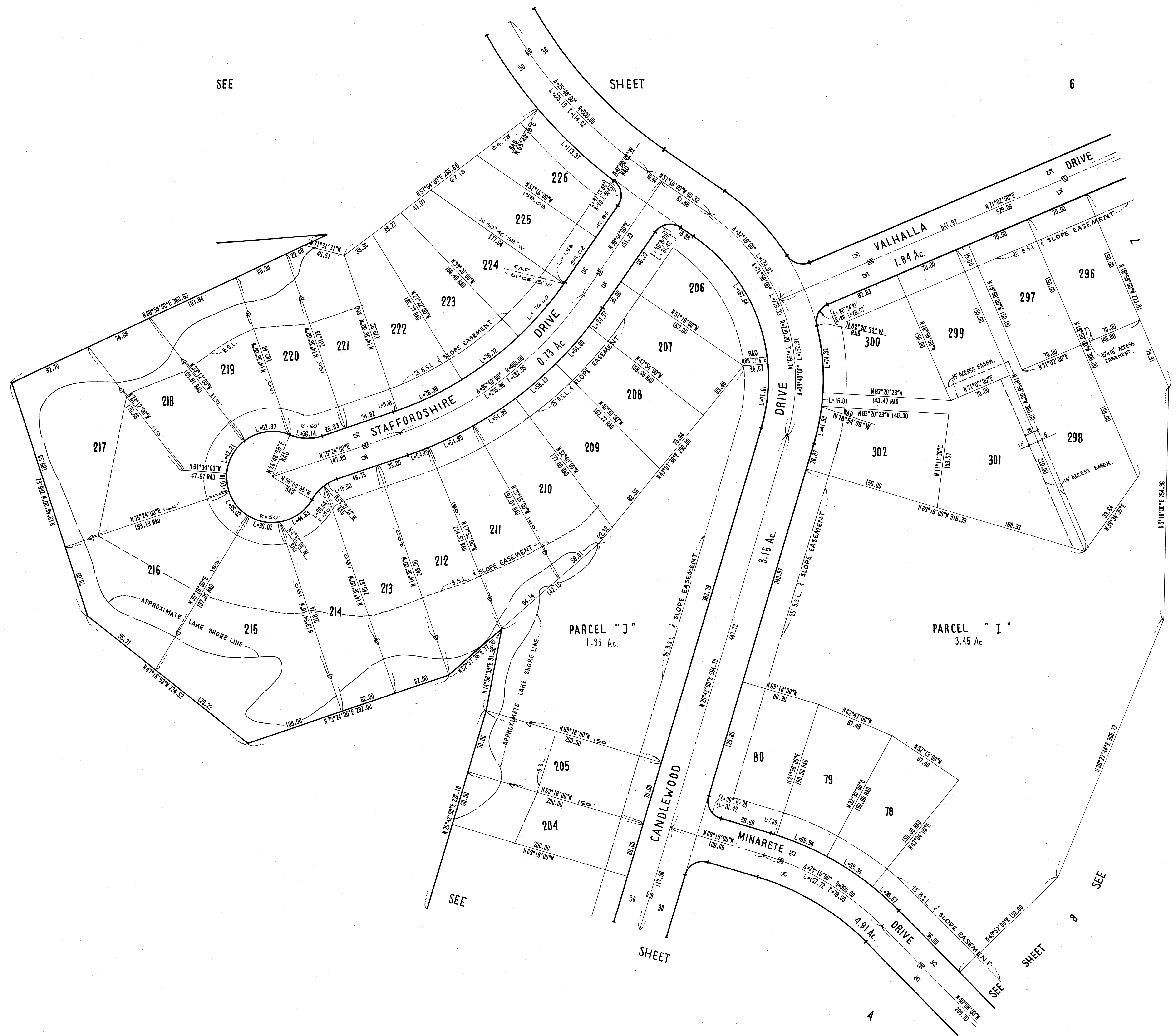
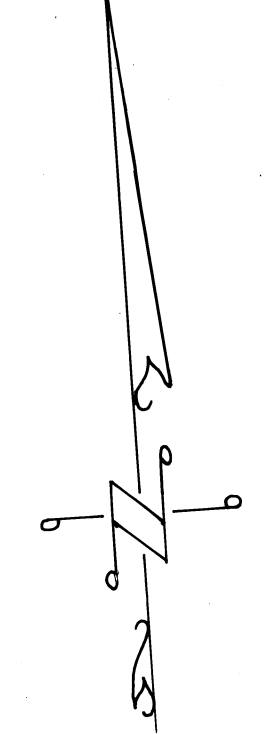
SHEET

6

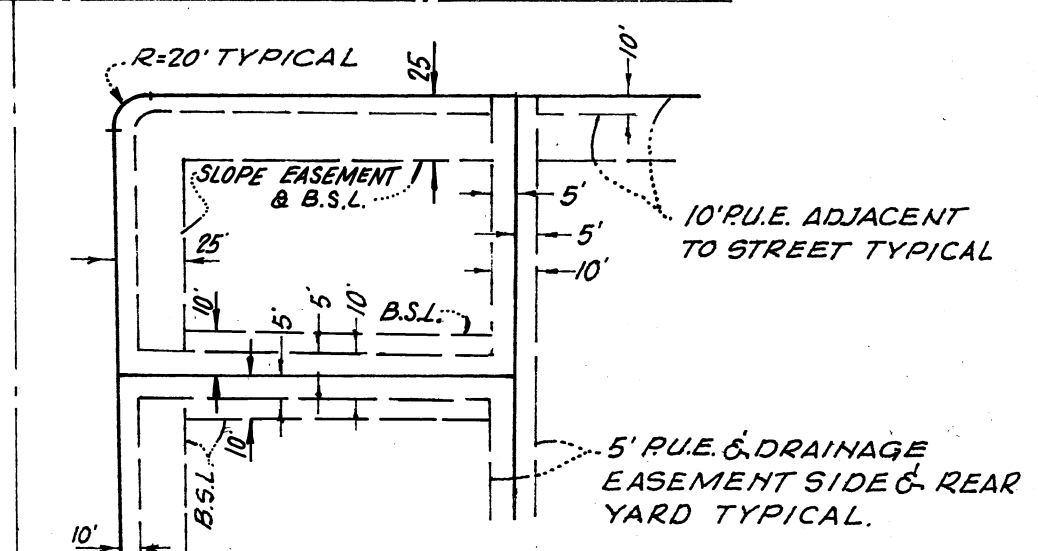
- NOTES:**
1. REAR LOT PINS WERE NOT SET AT THE REAR OF LOTS 195-205, 210-221 AND 230-232, INCLUSIVE.
 2. WITNESS POINTS WERE SET AS SHOWN Δ, 150' FROM THE FRONT LOT CORNER, EXCEPT WHERE NOTED.
 3. THE LAKE LINE SHOWN IS FOR A NORMAL WATER SURFACE AT ELEVATION 1205 BASED UPON APRIL 1971 TOPOGRAPHY COMPILED BY HENDERSON AERIAL SURVEYS OF OHIO.

LEGEND

B.S.L. = BUILDING SETBACK LINE.
 L = ARC LENGTH
 T = TANGENT LENGTH
 P.U.E. = PUBLIC UTILITY EASEMENT
 LOT 5' x 70' T' INCLUSIVE ARE SUBJECT TO DRAINAGE EASEMENTS IN THEIR ENTIRETY.



PRIVATE STREETS EXCEPT WHERE NOTED

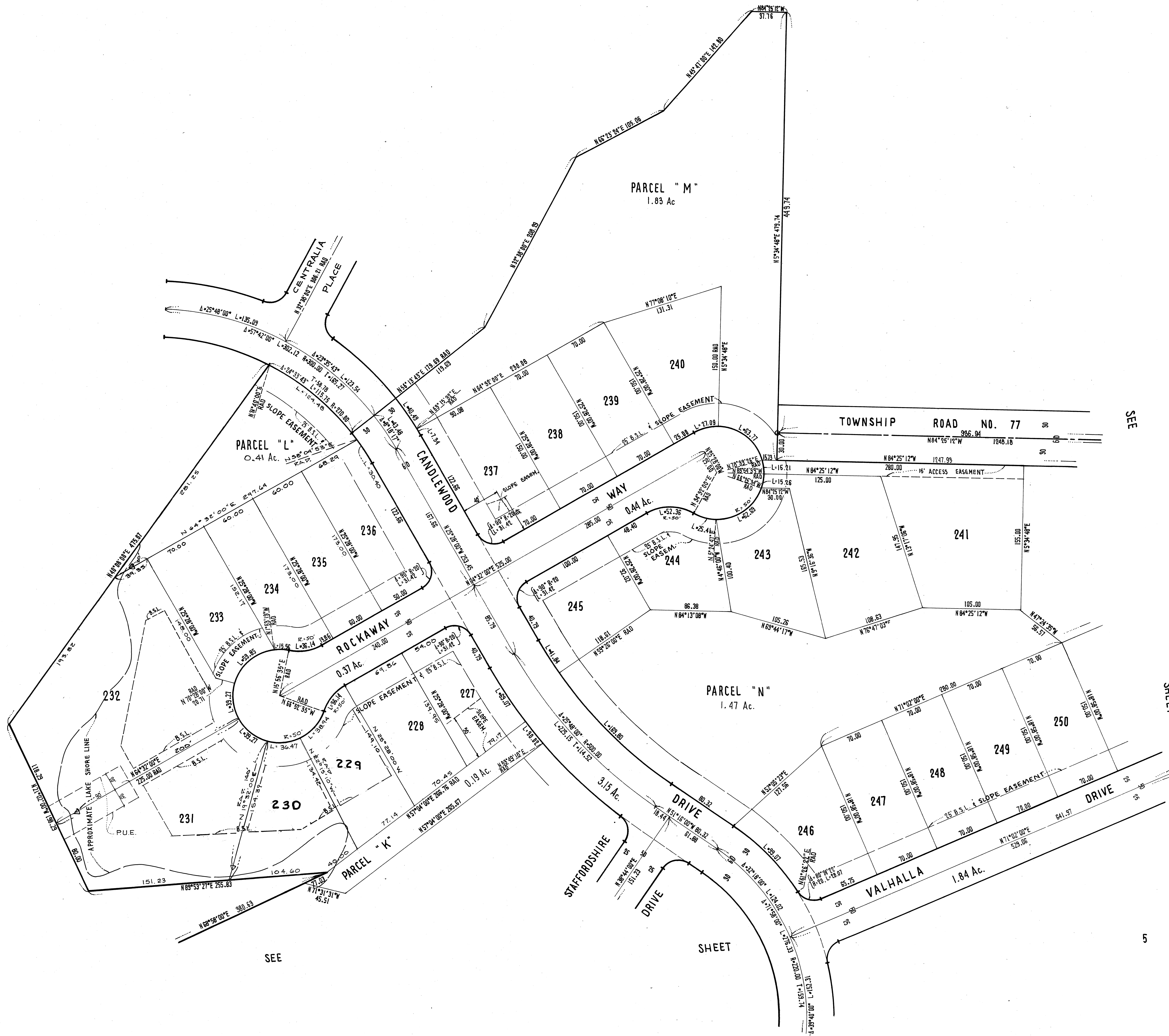


THE STREETS WITHIN THE SUBDIVISION ARE RESERVED FOR THE USE OF ALL PUBLIC UTILITY COMPANIES.

TYPICAL FRONT AND SIDEYARD SETBACK, SLOPE EASEMENT AND P.U.E. DETAIL.
 (NO SCALE)

CANDLEWOOD LAKE UNIT NO. 8

BEING A SUBDIVISION OF PORTIONS OF SECTION 8 & 17 TOWNSHIP 18 RANGE 70 CONGRESS TOWNSHIP, IN THE COUNTY OF MORROW, STATE OF OHIO.

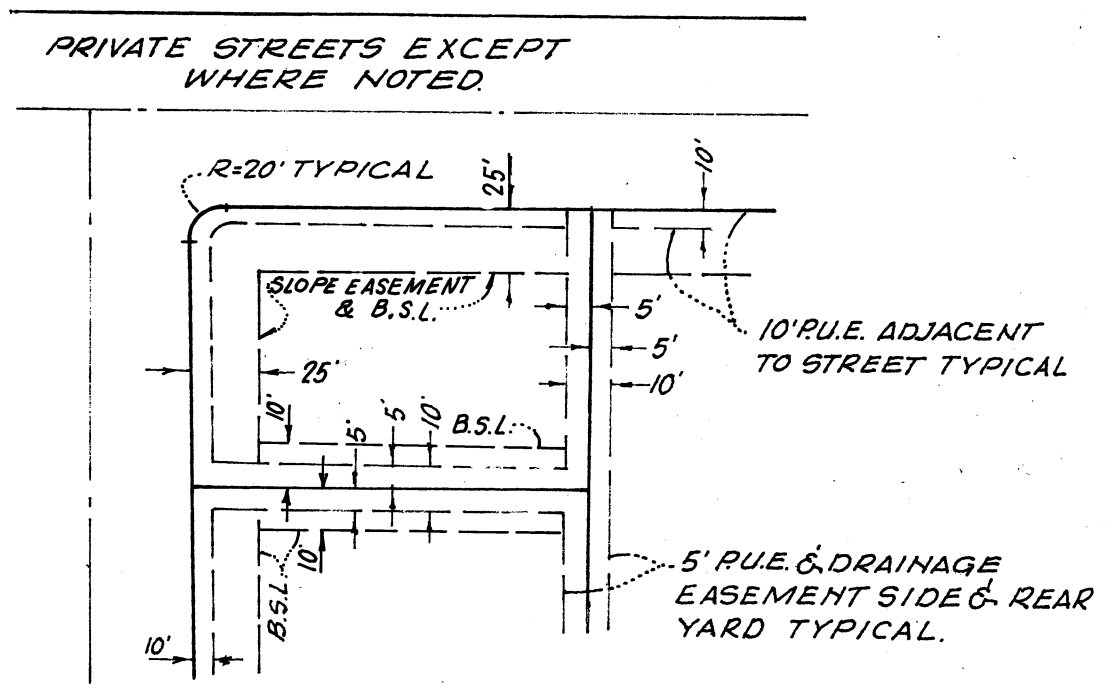
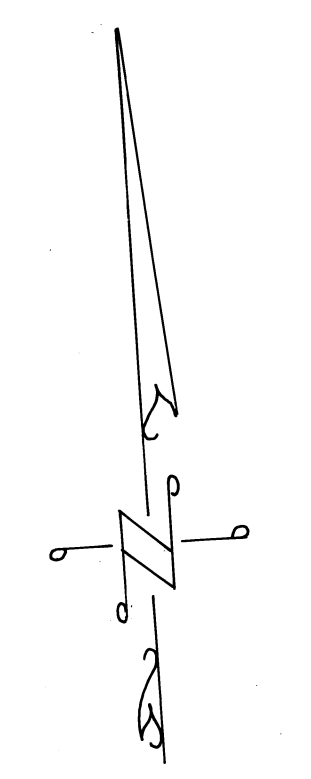


NOTES:

1. REAR LOT PINS WERE NOT SET AT THE REAR OF LOTS 105-205, 210-221 AND 230-232, INCLUSIVE.
2. WITNESS POINTS WERE SET AS SHOWN & 150' FROM THE FRONT LOT CORNER, EXCEPT WHERE NOTED.
3. THE LAKE LINE SHOWN IS FOR A NORMAL WATER SURFACE AT ELEVATION 1205, BASED UPON APRIL 1971 TOPOGRAPHY COMPILED BY HENDERSON AERIAL SURVEYS OF OHIO.

LEGEND

B.S.L. = BUILDING SETBACK LINE
 L = ARC LENGTH
 T = TANGENT LENGTH
 P.U.E. = PUBLIC UTILITY EASEMENT
 LOTS 'A' TO 'T' INCLUSIVE ARE SUBJECT TO DRAINAGE EASEMENTS IN THEIR ENTIRETY.

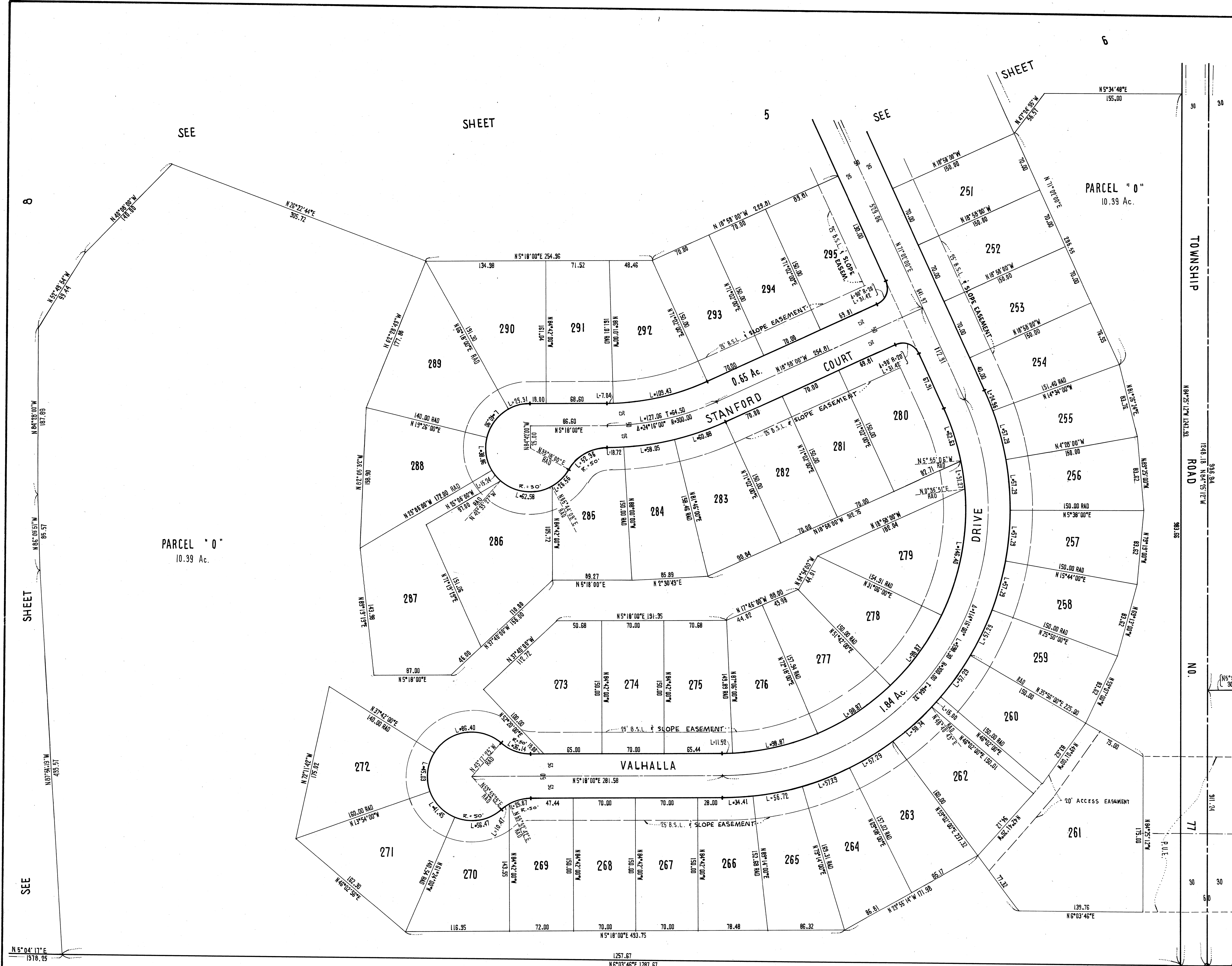


THE STREETS WITHIN THE SUBDIVISION ARE RESERVED FOR THE USE OF ALL PUBLIC UTILITY COMPANIES.

TYPICAL FRONT AND SIDEYARD SETBACK, SLOPE EASEMENT AND P.U.E. DETAIL. (NO SCALE)

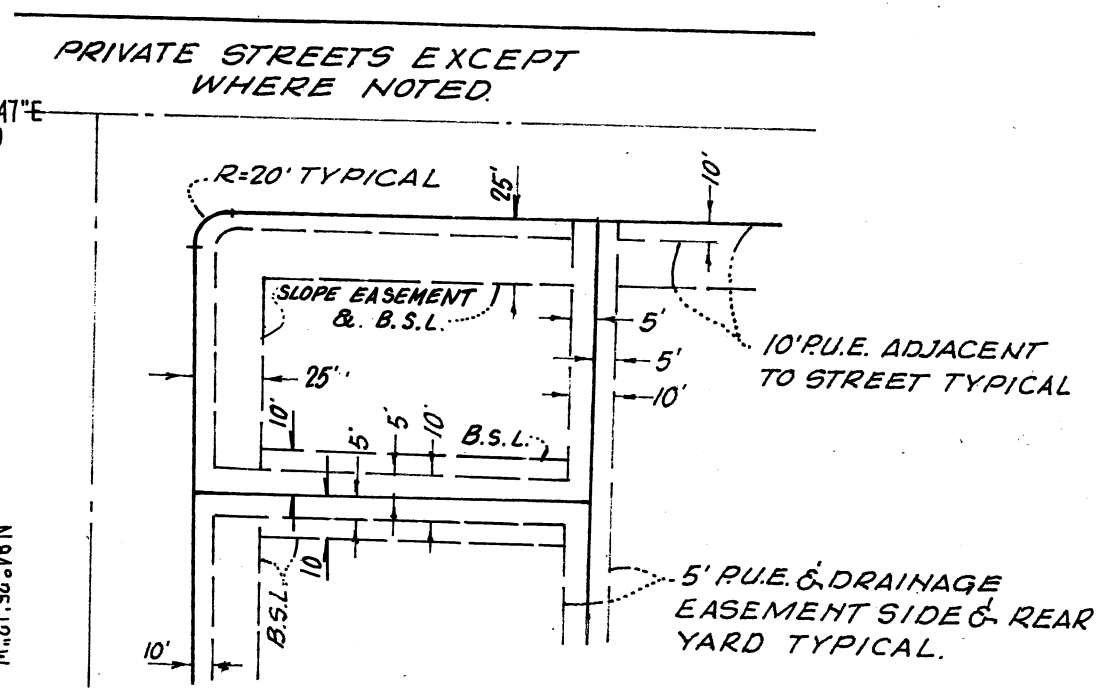
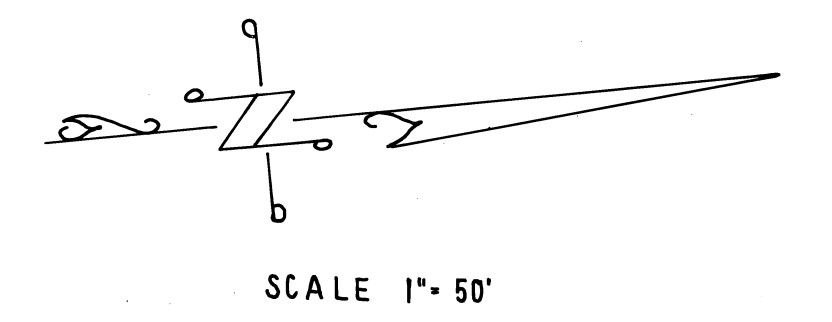
CANDLEWOOD LAKE UNIT NO. 8

BEING A SUBDIVISION OF PORTIONS OF SECTION 8 & 17 TOWNSHIP 18 RANGE 20 CONGRESS TOWNSHIP, IN THE COUNTY OF MORROW, STATE OF OHIO.



NOTES:
 1. REAR LOT PINS WERE NOT SET AT THE REAR OF LOTS 195-205, 210-221 AND 230-232 INCLUSIVE
 2. WITNESS POINTS WERE SET AS SHOWN
 3. 150' FROM THE FRONT LOT CORNER, EXCEPT WHERE NOTED.
 3. THE LAKE LINE SHOWN IS FOR A NORMAL WATER SURFACE AT ELEVATION 1205 BASED UPON APRIL 1971 TOPOGRAPHY COMPILED BY HENDERSON AERIAL SURVEYS OF OHIO.

LEGEND
 B.S.L. = BUILDING SETBACK LINE.
 L = ARC LENGTH
 T = TANGENT LENGTH
 P.U.E. = PUBLIC UTILITY EASEMENT
 LOTS "A" TO "T" INCLUSIVE ARE SUBJECT TO DRAINAGE EASEMENTS IN THEIR ENTIRETY.



THE STREETS WITHIN THE SUBDIVISION ARE RESERVED FOR THE USE OF ALL PUBLIC UTILITY COMPANIES.

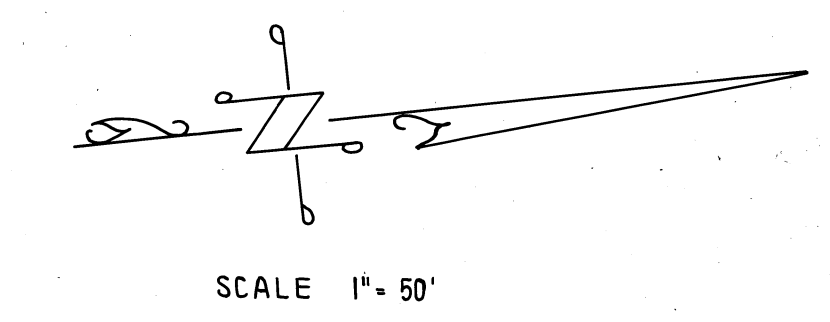
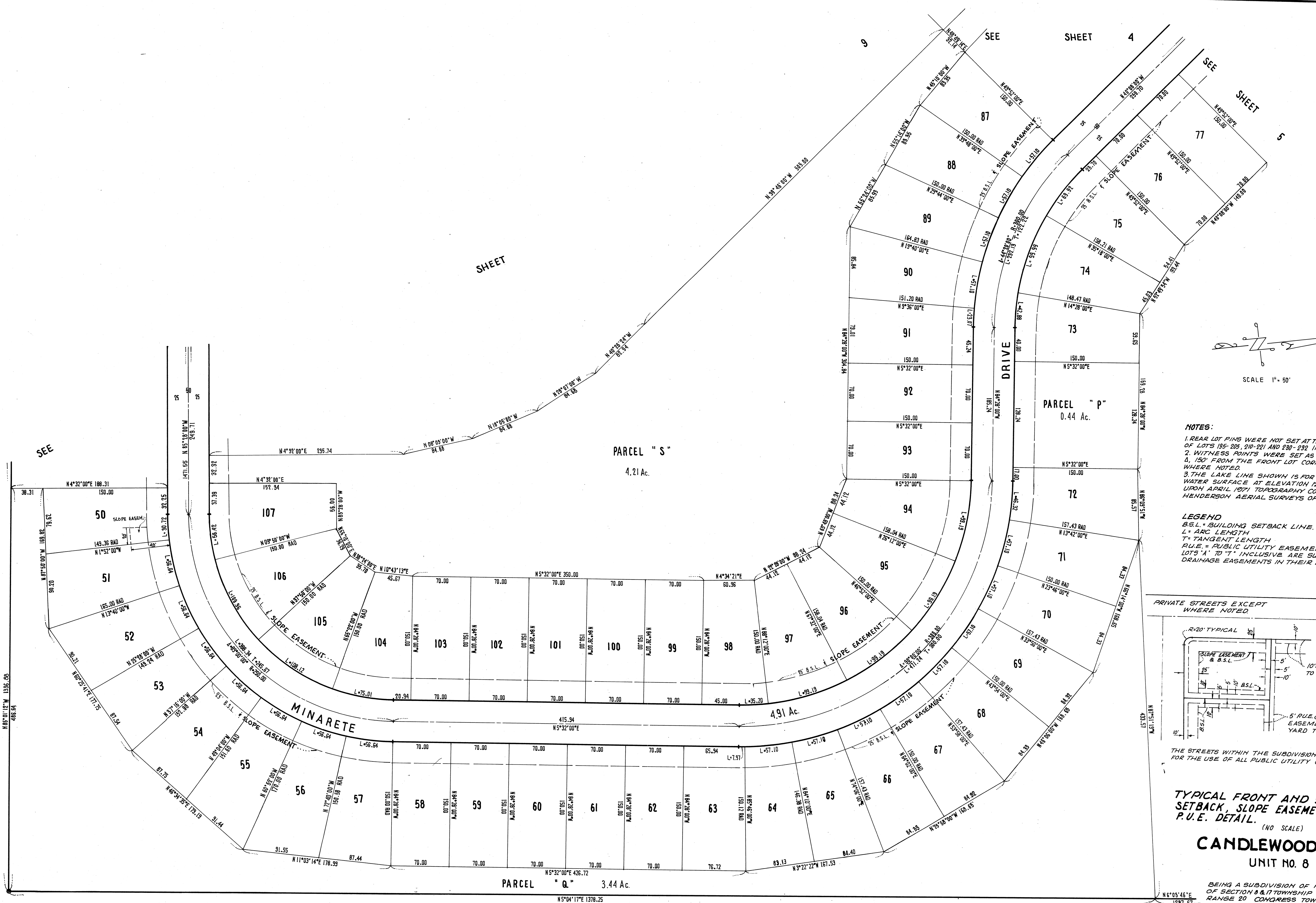
TYPICAL FRONT AND SIDYARD SETBACK, SLOPE EASEMENT AND P.U.E. DETAIL.
 (NO SCALE)

CANDLEWOOD LAKE UNIT NO. 8

BEING A SUBDIVISION OF PORTIONS OF SECTION 8 & 11 TOWNSHIP 18 RANGE 20 CONGRESS TOWNSHIP, IN THE COUNTY OF MORROW, STATE OF OHIO.

N 5° 04' 17" E
1376.95

1257.57
N 6° 03' 46" E 1287.67

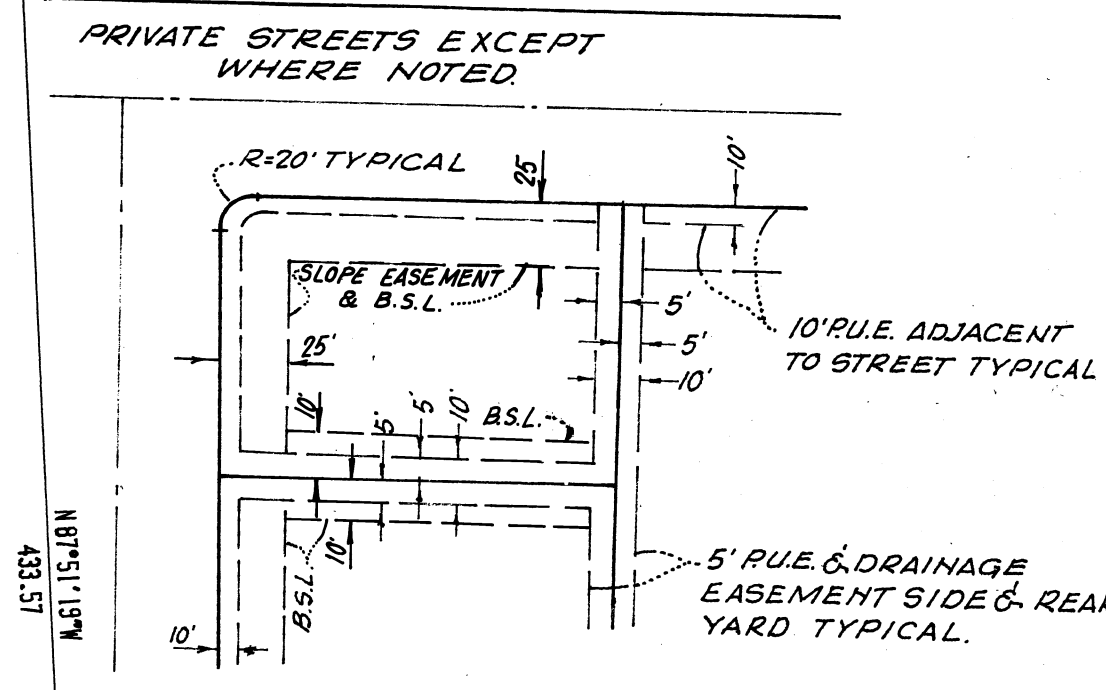


NOTES:

1. REAR LOT PINS WERE NOT SET AT THE REAR OF LOTS 195-205, 210-221 AND 230-232 INCLUSIVE
2. WITNESS POINTS WERE SET AS SHOWN & 150' FROM THE FRONT LOT CORNER, EXCEPT WHERE NOTED.
3. THE LAKE LINE SHOWN IS FOR A NORMAL WATER SURFACE AT ELEVATION 1205 BASED UPON APRIL 1971 TOPOGRAPHY COMPILED BY HENDERSON AERIAL SURVEYS OF OHIO.

LEGEND

B.S.L. = BUILDING SETBACK LINE.
 L = ARC LENGTH
 T = TANGENT LENGTH
 P.U.E. = PUBLIC UTILITY EASEMENT
 LOTS "A" TO "T" INCLUSIVE ARE SUBJECT TO DRAINAGE EASEMENTS IN THEIR ENTIRETY.

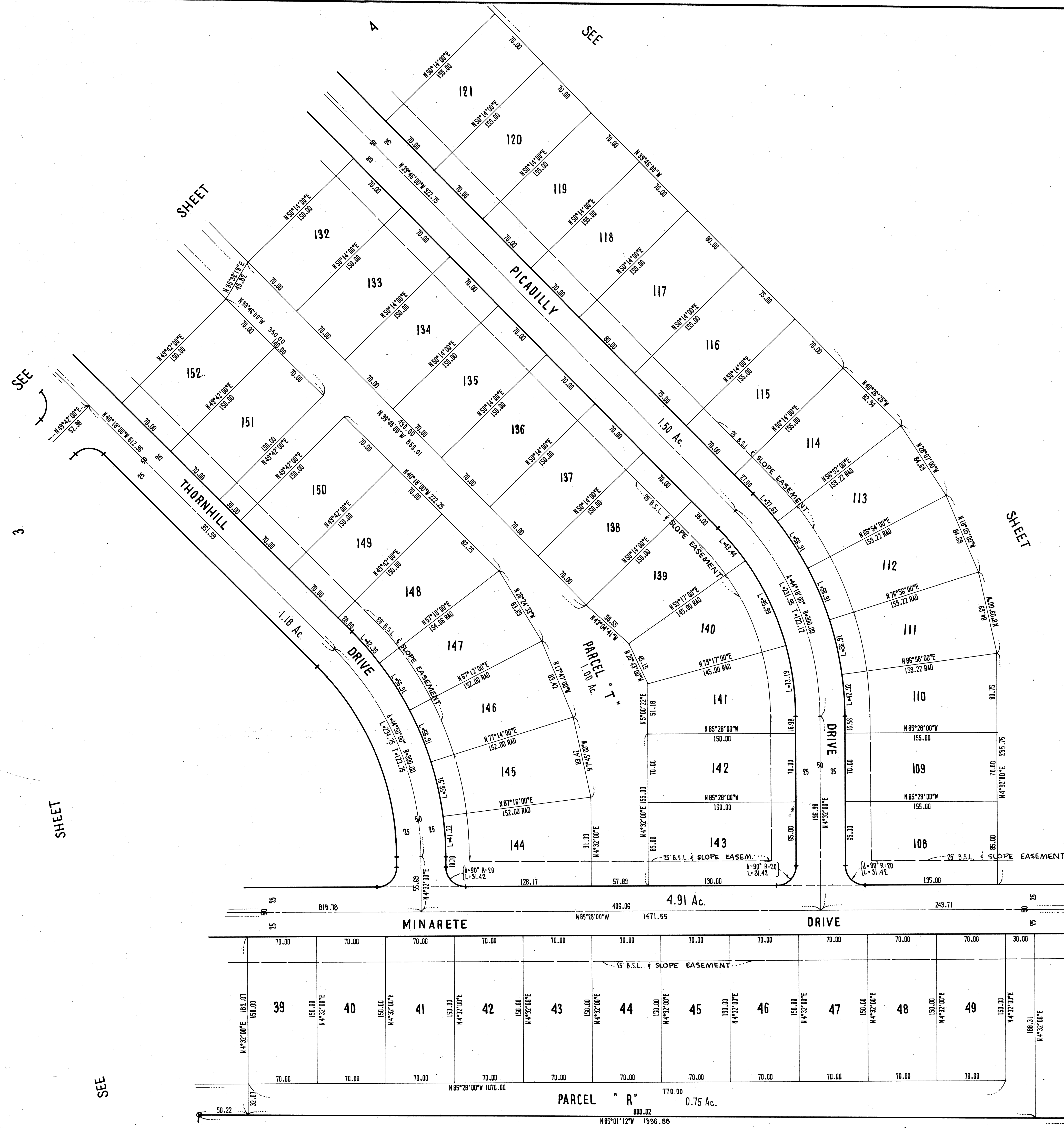


THE STREETS WITHIN THE SUBDIVISION ARE RESERVED FOR THE USE OF ALL PUBLIC UTILITY COMPANIES.

TYPICAL FRONT AND SIDEYARD SETBACK, SLOPE EASEMENT AND P.U.E. DETAIL.
 (NO SCALE)

**CANDLEWOOD LAKE
 UNIT NO. 8**

BEING A SUBDIVISION OF PORTIONS OF SECTION 8 & 11 TOWNSHIP 18 RANGE 20 CONGRESS TOWNSHIP, IN THE COUNTY OF MORROW, STATE OF OHIO.

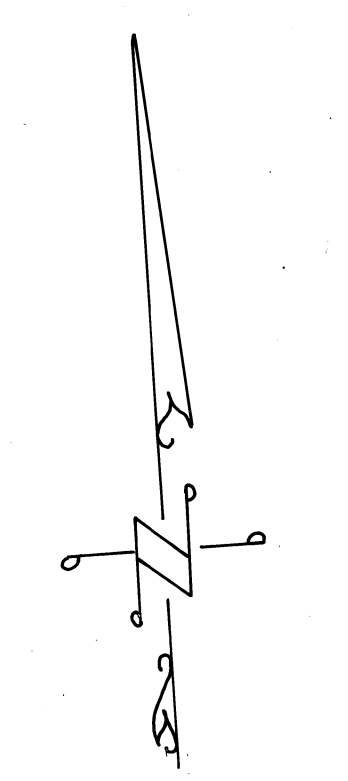


NOTES:

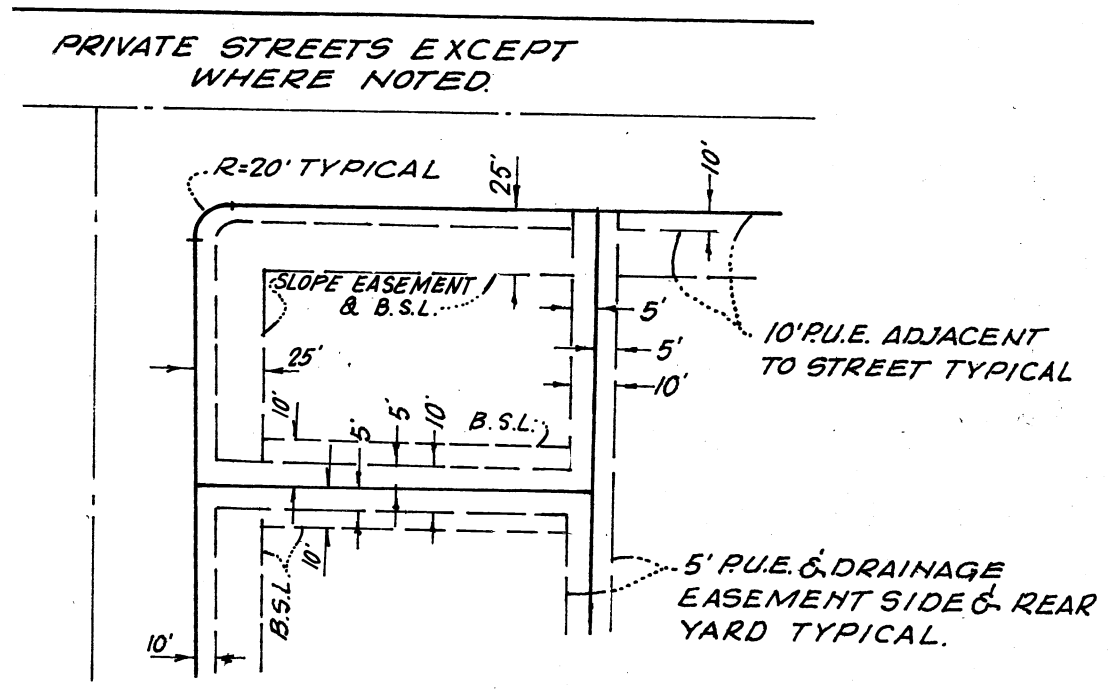
1. REAR LOT PINS WERE NOT SET AT THE REAR OF LOTS 105-203, 210-221 AND 230-232 INCLUSIVE
2. WITNESS POINTS WERE SET AS SHOWN Δ, 150' FROM THE FRONT LOT CORNER, EXCEPT WHERE NOTED.
3. THE LAKE LINE SHOWN IS FOR A NORMAL WATER SURFACE AT ELEVATION 1205 BASED UPON APRIL 1971 TOPOGRAPHY COMPILED BY HENDERSON AERIAL SURVEYS OF OHIO.

LEGEND

- B.S.L. - BUILDING SETBACK LINE.
- L - ARC LENGTH
- T - TANGENT LENGTH
- P.U.E. - PUBLIC UTILITY EASEMENT
- LOTS 'A' TO 'T' INCLUSIVE ARE SUBJECT TO DRAINAGE EASEMENTS IN THEIR ENTIRETY.



SCALE 1" = 50'



THE STREETS WITHIN THE SUBDIVISION ARE RESERVED FOR THE USE OF ALL PUBLIC UTILITY COMPANIES.

TYPICAL FRONT AND SIDEYARD SETBACK, SLOPE EASEMENT AND P.U.E. DETAIL. (NO SCALE)

CANDLEWOOD LAKE UNIT NO. 8

BEING A SUBDIVISION OF PORTIONS OF SECTION 8 & 17 TOWNSHIP 18 RANGE 20 CONGRESS TOWNSHIP, IN THE COUNTY OF MORROW, STATE OF OHIO.